



A world-class theatre and production centre in Britain's Ocean City

Contents

- 4 Theatre Royal Plymouth
- 5 Production and Learning Centre, TR2
- 6 Design to Completion
- 7 Facilities
- 8 Floor Plan
- 9 Wider Facilities
- 10 Previous Clients
- 11 Plymouth, UK
- 12 Staying in Plymouth
- 13 Connectivity
- 14 Contacts





Theatre Royal Plymouth



Supported using public funding by
**ARTS COUNCIL
ENGLAND**



Theatre Royal Plymouth is the largest and best attended regional producing theatre in the UK. Across its three stages The Lyric, The Drum and The Lab, TRP produces and presents a wide variety of theatre, musicals, drama, ballet and opera serving a regional audience of over 2.1 million across Cornwall, Devon, Somerset and the city of Plymouth.

TRP employs over 300 dedicated staff including leading artists and crafts people and attracts an annual audience of over 300,000. TRP is a registered charity, turning over £15m per annum, is proudly a National Portfolio Organisation funded by Arts Council England and receives annual revenue support from Plymouth City Council.



Production and Learning Centre, TR2

TRP's Production and Learning Centre, TR2, is a world-renowned centre for scenic design and construction that has been delivering sets to leading producers for over 15 years.

All production activities including set, costume and prop manufacture are centralised and integrated with rehearsal, education, and communal spaces. TR2 is also home to TRP's Engagement and Learning department where we engage with over 17,000 participants every year through community projects and workshops to reach particularly vulnerable or isolated groups of people across the city and region.



Design to Completion

Our Design and Project Management Team pride themselves on the way we communicate with clients at all stages of the life of the project. We have dedicated project management software which clients can easily access so they can have up to the minute information about all stages of a build. We work with our clients to secure approval of samples and drawings to ensure the finished product matches exactly what has been specified.

We specialise in considering the design of the project paying meticulous attention to any constraints on how equipment needs to be handled and transported. These considerations flow through to our CDM technical file ensuring that you have all the certificates and method statements required for inclusion into your own CDM pack.

Where the scenery is regarded as structural, we ensure that the fabrication process conforms to *BSEN1090-2: Technical Requirements for The Execution of Steel Structures* - in line with the requirements of structural calculations. We also have a proven track record in working seamlessly alongside design engineers, automation experts and electricians to ensure a project comes together to the highest specification.



Facilities

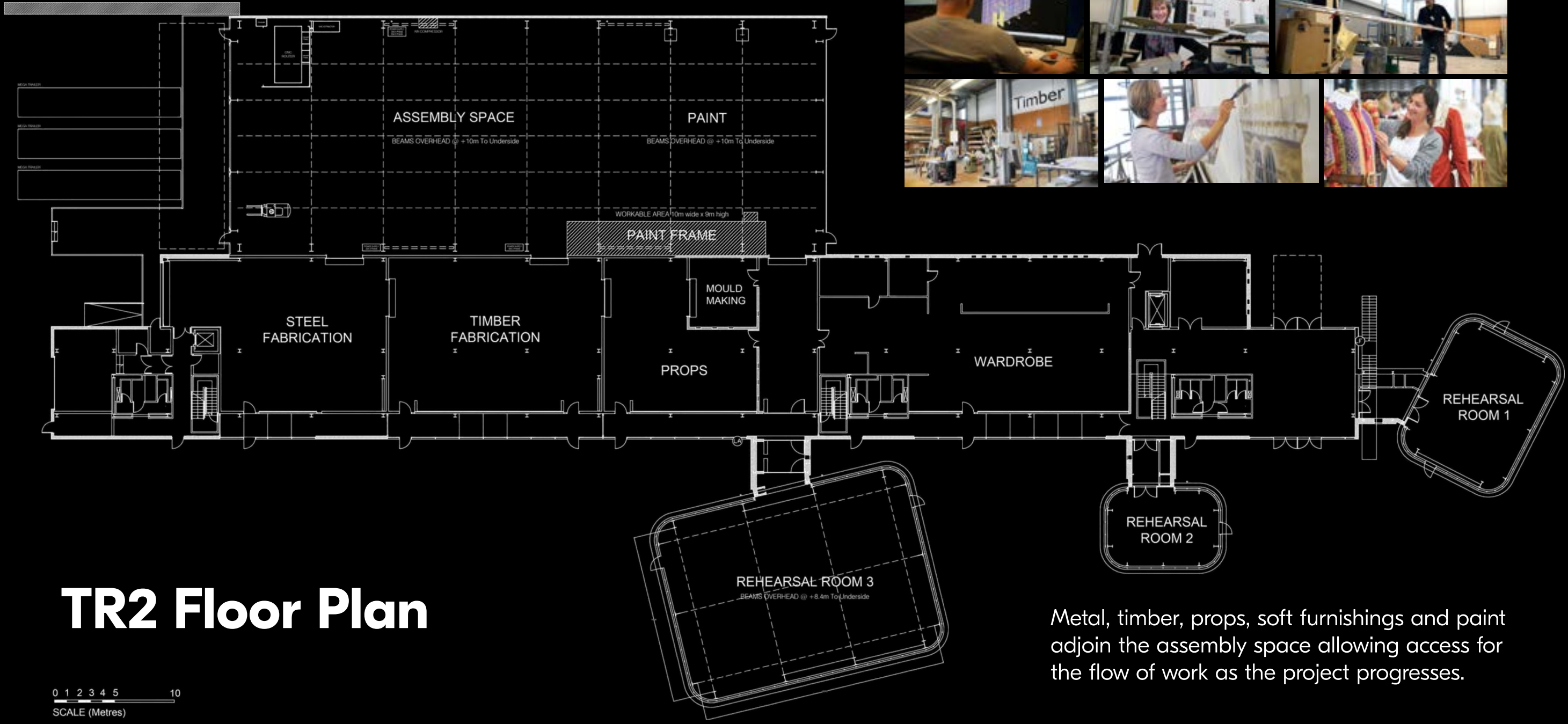
Scenic Finishes — TR2 offers a wide range of scenic finishes, 3D scenic finishes, faux and textural effects. The scenic area also has a 10m wide x 9m drop paint frame.

Metal Fabrication — There is a dedicated fabrication shop where we use both steel and aluminium MIG and TIG welding. Through our design process we are able to employ laser and plasma cutting processes producing work for large scale complex structures through to intricate sculptural pieces. The metal shop directly accesses the assembly space and timber shop.

Carpentry — TR2 has a dedicated carpentry shop which uses both traditional bench joinery techniques as well as using our highly accurate CNC wood router. This results in scenery, which is accurate, light and robust, perfect for a tough touring environment. Our team is highly skilled in multiple finishes from softs and printed fabrics, vac form, fibreglass and laminate finishes. The wood shop directly accesses the assembly space and timber shop.

The assembly space leads through to our largest rehearsal space - Rehearsal Room 03 via a large corridor. Its floor is 20m x 15m (approx.) with a ceiling height of 8.3m. 35 one-tonne rigging points are evenly distributed across the steel girder ceiling structure.

This allows for large productions to be fully built and commissioned allowing technical rehearsals to take place on site. Automation and LX can be powered in the space where there is 3 phase 63-amp and 32-amp along with 32-amp single phase. We also have a stock of H30V Prolyte aluminium truss available for use.



TR2 Floor Plan

Metal, timber, props, soft furnishings and paint adjoin the assembly space allowing access for the flow of work as the project progresses.



Wider Facilities

Performers can rehearse and be available for measuring-up and fitting costumes as the set is fabricated. Designers, producers and directors have spaces to work. The building has two additional Rehearsal Rooms (15 x 9 x 5 metres and 9 x 6 x 5 metres).

There is also a fully equipped Wardrobe facility. The building also has breakout rooms, Green Rooms and office spaces. It has fibre broadband throughout with a dedicated production Wi-Fi channel for clients' use.

TR2

Previous Clients

Designed by Ian Ritchie Architects (2003)

Britain's "Building of the Year" (2003)

EU Mies Award: Shortlist (2005)

Abercrombie Architectural Design Best New Building & Overall Best Award (2004)

Galvanizing Awards (Highly Commended) (2004)

RIBA Award & Stirling Prize: Shortlist (2003)

Royal Fine Art Commission Trust Building of the Year Award (2003)

AIA Award of Design Excellence (2003)

Copper Development Association Innovation in Copper: Highly Commended (2003)

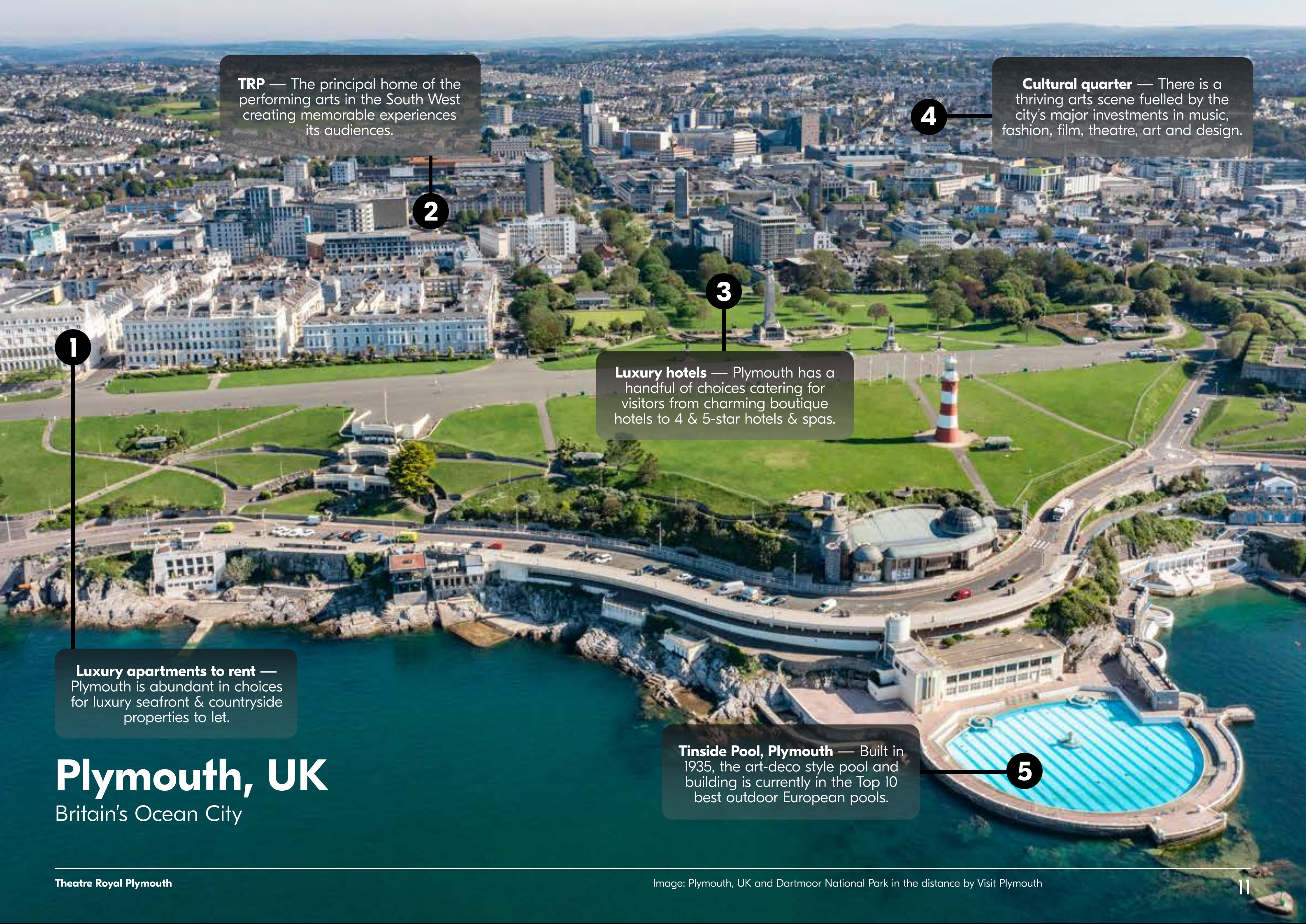
[More from the architects](#)

49 Donkeys Hanged
A Midsummer Nights Dream
A Very Old Man With Enormous Wings
After Electra
Air Inside Wagner's Head
Aladdin
Angry Brigade
Another Place
Astronaut's Chair
Bat Out of Hell
Big the Musical
Billy Elliott
Blue Road
Boots at the Door
Chalk Garden
Chitty Chitty Bang Bang
Cosi Fan Tutte
Die Zauberflöte
Don Juan
Don Quixote
Drakes Circus Flowers
Elf the Musical
Elizabeth I
Epiphany
Faustus Leopoldstadt
Fiddler on the Roof
Five Guys Named Moe
Flash Dance
Forever House
Forgotten
Full Stop

Girls Like That
Giulio Cesare (Julius Caesar)
Gods of Chaos
Grand Finale
Grand Guignol
Ground Hog Day
Guys and Dolls
Hairspray
Heads Will Roll
Horse Piss for Blood
I Believe in Unicorns
IDAT
Idomeneo
Illuminate Festival Plymouth
Imperium Tartuffe
Intermezzo
Janis Joplin
Judas Kiss
Kate Bush, Before the Dawn Love & Information
King Lear
Kneebone Cadillac
Labyrinth
Laurence After Arabia
Lend Me a Tenor
Lion King
Little Mermaid
Macbeth
Mack and Mabel
Mad Man
Man With a Hammer
Mary Poppins

Measure for Measure
Mended
Merit
Miss Saigon
Monster Raving Loony
My Night With Reg
Neville's Island
Noises Off
Othello
Phantom of the Opera Tour
Priscilla Queen of the Desert
Quadrophenia
Rebecca
Riverdance 25
Sailors and Sweethearts
Salome
Services Rendered
Seven Brides for
Seven Brothers
Short Changed
Singing in the Rain
Sleepless in Seattle
Spice Girls the Musical
Stephan Ward
Strictly Ballroom
Sugar Water
Sunset Boulevard
Swan Lake
The Bartered Bride
The Boy in a Dress
The Edge
The Fantastic Mr Fox

The Height of the Storm
The Hour Hammer
and Tong The Believers
The House They Grew
Up In Tristan and Yseult
The Husbands
The Lady Killers
The Magic Flute
The Moderate Soprano
The Price
The SpongeBob Musical
The Tempest
The War Has Not
Yet Started
Ross
The Wedding Singer
The Wraith
This is my Family
Touching the Void
Tower of London
Poppies Installation
Waiting for God
War Requiem
Warhorse Solid
Way Upstream
Whipping Man
White Christmas
White Teeth
Wicked
Wife
Wind in the Willows
Winter's Tale



TRP — The principal home of the performing arts in the South West creating memorable experiences its audiences.

Cultural quarter — There is a thriving arts scene fuelled by the city's major investments in music, fashion, film, theatre, art and design.

Luxury hotels — Plymouth has a handful of choices catering for visitors from charming boutique hotels to 4 & 5-star hotels & spas.

Luxury apartments to rent — Plymouth is abundant in choices for luxury seafront & countryside properties to let.

Tinside Pool, Plymouth — Built in 1935, the art-deco style pool and building is currently in the Top 10 best outdoor European pools.

Plymouth, UK

Britain's Ocean City



Staying in Plymouth

Plymouth ranks fourth for its quality of life, according to the The Arcadis Investing in Britain: Cities Built for the Future Study (2018) and The Independent rated Plymouth in the Top 20 cities to live in 2015 based on the Good Growth for Cities Index by PwC/Domos. A wide choice of accommodation is available in Plymouth and the surrounding area with water surrounding approximately two-thirds of the city and moorland and countryside the remaining third, many residential areas have spectacular waterfront or country views.

Over 40% of the city is designated as green space and is surrounded by 3 Areas of Outstanding Natural Beauty. Plymouth has 10 Local Nature Reserves, over 40 wildflower meadows, 9 Special Sites of Scientific Interest and 28 County Wildlife Sites with Plymouth Sound & Harbour as the country's first National Marine Park.

Local areas

[Royal William Yard](#)
[Drake Circus Mall](#)
[Barbican Waterfront](#)
[The Box Museum](#)

City Events

[GB Sail Grand Prix](#)
[Flavour Festival](#)
[British Fireworks Championships](#)

Accommodation

[Crowne Plaza Plymouth](#)
[Boringdon Hall and Spa](#)
[Rooms by Bistrot Pierre](#)
[Luxury Sea Views Plymouth](#)

Tourism

[Visit Plymouth](#)
[One Plymouth](#)
[Plymouth Culture](#)
[Plymouth City Council](#)



Connectivity

GWR operates an improved rail service between Plymouth and London with up to 24 services a day. Exeter and Bristol International airports are located just one and two hours away respectively, and Brittany Ferries operates regular passenger services to Roscoff in France and Santander in Northern Spain directly from Plymouth.

Find out more about travel information [here](#).

Newquay	Bristol	Exeter	London
1 hr by car 2 hrs by train	1.5 hrs by car 2 hrs by train	45 min by car 50 min by train	3.5 hrs by car 3 hrs by train 80 min by helicopter
Cornwall Airport	Bristol Airport	Exeter Airport	London Airports
International & Domestic	International & Domestic	International & Domestic	International & Domestic
Private jet & helicopter services	Private jet & helicopter services	Private jet & helicopter services	Private jet & helicopter services



TRP Theatre Royal Plymouth

James Mackenzie-Blackman
Chief Executive and Executive Producer
j.mackenzie-blackman@theatreroyal.com
+441752 230328

Laura Edwards
Head of Artistic Planning, Stages
laura.edwards@theatreroyal.com
+441752230350

Sebastian Soper
Head of Project Development, TR2
sebastian.soper@theatreroyal.com
+441752230460



Supported using public funding by
**ARTS COUNCIL
ENGLAND**

